

Reebok

OFFICIAL OUTFITTER OF THE NFL



# NFL EQUIPMENT

FALL 07

RONNIE BROWN  
MIAMI DOLPHINS - RB

2017A - DIGITAL SHORT SLEEVE STRETCH MESH





# FOR THE **ATHLETE** WHO TRAINS AT THE **HIGHEST LEVEL**

2310A "SPEEDWICK" TIGHT SHORT SLEEVE .....	05
2311A "SPEEDWICK" TIGHT LONG SLEEVE .....	05
2242A "SPEEDWICK" SHORT SLEEVE LOOSE FIT .....	05
2243A "SPEEDWICK" LONG SLEEVE LOOSE FIT .....	05
2312A "SPEEDWICK" WOOL COLD WEATHER MOCK .....	05

2245A "TRIPLE IMPACT" SLEEVELESS .....	07
2245A "TRIPLE IMPACT" SHORT SLEEVE .....	07
9202A "TRIPLE IMPACT" SHORT .....	07

2304A "SPEED FLEX" CAP SLEEVE LOOSE FIT .....	09
2303A "SPEED FLEX" SHORT SLEEVE LOOSE FIT .....	09
2305A "SPEED FLEX" LONG SLEEVE LOOSE FIT .....	09
2234A "SPEED FLEX" SEAMLESS SLEEVELESS .....	09
2235A "SPEED FLEX" SEAMLESS SHORT SLEEVE .....	09

2317A DIGITAL SHORT SLEEVE STRETCH MESH .....	11
2318A DIGITAL LONG SLEEVE STRETCH MESH .....	11
9158A "VENTILATOR" COMPRESSION SHORT .....	11

2051A STRETCH MESH SLEEVELESS .....	13
2028A STRETCH MESH SHORT SLEEVE .....	13
2050A STRETCH MESH LONG SLEEVE .....	13
9126A 5 POCKET COMPRESSION SHORT .....	13
R952A "BODY BULLET" COMPRESSION SHORT .....	13

R223A "LOOSEGLIDE" SLEEVELESS .....	15
R216A "LOOSEGLIDE" SHORT SLEEVE .....	15
R226A "LOOSEGLIDE" LONG SLEEVE .....	15
8173A FLEECE HOODY .....	15
R929A MESH PERFORMANCE SHORT .....	15

R235A COLD WEATHER "MOCK TOASTY" .....	17
R957A COLD WEATHER "TOASTY" TIGHT .....	17
2058A TEXTURED COLD WEATHER MOCK .....	17
2131A TEXTURED COLD WEATHER CREW .....	17
9205A TEXTURED COLD COMPRESSION SHORT .....	17

R216B "LOOSEGLIDE" SHORT SLEEVE .....	18
R226B "LOOSEGLIDE" LONG SLEEVE .....	18
2242B "SPEEDWICK" SHORT SLEEVE SHIRT .....	18
2243B "SPEEDWICK" LONG SLEEVE SHIRT .....	18
R217B "BODY BULLET" SHORT SLEEVE .....	19
R218B "BODY BULLET" LONG SLEEVE .....	19
R235B COLD WEATHER "MOCK TOASTY" .....	19
R957B COLD WEATHER "TOASTY" TIGHT .....	19

H003Z 4" EQUIPMENT WRISTBAND .....	20
H075Z 2" EQUIPMENT WRISTBAND .....	20
H017Z 6" EQUIPMENT WRISTCOACH .....	20
Y008Z NFL EQUIPMENT FOREARM SHIMMEL .....	20
H001Z NFL EQUIPMENT HEADBAND .....	21
Y006Z NFL EQUIPMENT THERMAL HOOD .....	21
C045Z GAME SOCK .....	21
K144Z NFL EQUIPMENT JERSEY SKULL CAP .....	21





## PLAY DRY™ TECHNOLOGY

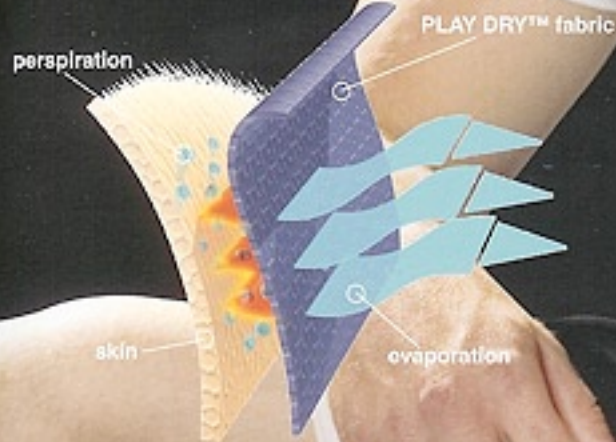
A MOISTURE MANAGEMENT SYSTEM THAT HELPS KEEP YOU COOLER, DRIER, AND MORE COMFORTABLE.

**PERFORMANCE** PLAY DRY™ products with built-in performance work for you, helping you remain cooler and drier in competition, training or other activities.

**PLAY DRY™ FABRICATIONS** are used in all Reebok products bearing the PLAY DRY™ logo.

**MOISTURE MANAGEMENT** PLAY DRY™ performance fabrics are specially engineered in structure and content to allow performance to be built into the materials used to make PLAY DRY™ products.

**COMFORT** PLAY DRY™ materials move moisture away from your skin to the outer layer of the fabric for quick evaporation, leaving you drier and more comfortable.





A photograph of Peyton Manning, a professional football player, holding a brown leather football with both hands. He is wearing a grey short-sleeved t-shirt and is looking over his shoulder towards the camera. The background is plain white.

## PEYTON MANNING

2242A - "SPEEDWICK" SHORT SLEEVE SHIRT  
INDIANAPOLIS COLTS - QB

## SPEEDWICK

- Easy-moving design enhances any activity
- Lighter weight Play Dry™ moisture management fabric keeps you cool and dry all year round
- Anti-Microbial / Cotton Handfeel



## SPEEDWICK

Raglan sleeve and Flatlock. 3 technologies incorporated in the yarn: Play Dry™ offers ultimate moisture management; AMY (anti-microbial yarns) prevents the growth of odor-causing bacteria and preserves fabrics and garments from discoloration and degradation caused by mold, mildew and fungi; Augusta - Performance Filament Polyester with a spun-like look and feel.

## SPEEDWICK WOOL

Double Knit Play Dry™ Polyester in arms and shoulders helps disperse heat and regulate body temperature. Play Dry™ Nylon/Marina wool Teri loop in body helps regulate body temperature to keep you warm in colder climates, natural antimicrobial helps reduce the garment from accumulating odor. Flatlock stitching and technical raglan cut creates a seamless feel. Play Dry™ technology offers ultimate moisture management.



### 2310A "SPEEDWICK" TIGHT SHORT SLEEVE

COMPRESSION - ANTI-MICROBIAL/COTTON HAND

Suggested Retail: \$28.00

Sizes: S-2XL

Delivery Date: 05/15/07

Content: 5.0 oz. 95% Play Dry™ Polyester/5% Spandex

### 2311A "SPEEDWICK" TIGHT LONG SLEEVE

COMPRESSION - ANTI-MICROBIAL/COTTON HAND

Suggested Retail: \$35.00

Sizes: S-2XL

Delivery Date: 05/15/07

Content: 5.0 oz. 95% Play Dry™ Polyester/5% Spandex

### 2242A "SPEEDWICK" SHORT SLEEVE LOOSE FIT

LOOSE FIT - ANTI-MICROBIAL/COTTON HAND

Suggested Retail: \$22.00

Sizes: S-2XL

Delivery Date: In-Stock

Content: 4.7 oz. 100% Play Dry™, Polyester

### 2243A "SPEEDWICK" LONG SLEEVE LOOSE FIT

LOOSE FIT - ANTI-MICROBIAL/COTTON HAND

Suggested Retail: \$28.00

Sizes: S-2XL

Delivery Date: In-Stock

Content: 4.7 oz. 100% Play Dry™, Polyester

### 2312A "SPEEDWICK" WOOL COLD WEATHER MOCK

LOOSE FIT - ANTI-MICROBIAL/COTTON HAND

Suggested Retail: \$80.00

Sizes: S-2XL

Delivery Date: 05/15/07

Content: 6.5 oz. Play Dry™, 52% Nylon/40% Wool/8% Spandex

Content: 7.0 oz. 89% Play Dry™ Polyester/11% Spandex (Arms/Shoulders)





A full-page photograph of Donovan McNabb, a professional football player, wearing a dark Philadelphia Eagles jersey with white shoulder accents and a black headband. He is looking directly at the camera with a serious expression. The jersey features the Philadelphia Eagles logo on the chest and a Reebok logo on the lower left side.

## DONOVAN MCNABB

2245A • "TRIPLE IMPACT" SLEEVELESS  
PHILADELPHIA EAGLES • QB

### TRIPLE IMPACT

- Performance stretch mesh on side and back panels for increased breathe-ability
- Textured fabrication constructed in shoulders, reduces the slickness of fabric
- Play Dry™ fabric offers ultimate moisture management and wicking properties



## TRIPLE IMPACT

Triple Impact incorporates performance stretch mesh on side and back panels for increased breathe-ability. Textured fabrication constructed in shoulders, reduces the slickness of fabric. Play Dry™ fabric offers ultimate moisture management and wicking properties. Compression fit.

Removable DMX® padding provides athletes with lightweight, low-profile, flexible cushioning. The DMX® component is precision molded from a lightweight, yet durable Ethyl Vinyl Acetate (EVA). Flex grooves are molded into the component to allow it to follow the individual contours of each athlete.



### 2245A "TRIPLE IMPACT" SLEEVELESS

COMPRESSION

Suggested Retail: \$65.00

Sizes: S-2XL

Delivery Date: In-Stock

Content: 81% Polyester/19% Lycra

Content: 80% Tactel Nylon/20% Lycra

Content: 79% Nylon Tactel/21% Lycra (Mesh)



### 2244A "TRIPLE IMPACT" SHORT SLEEVE

COMPRESSION

Suggested Retail: \$70.00

Sizes: S-2XL

Delivery Date: In-Stock

Content: 81% Polyester/19% Lycra

Content: 80% Tactel Nylon/20% Lycra

Content: 79% Nylon Tactel/21% Lycra (Mesh)



### 9202A "TRIPLE IMPACT" SHORT

COMPRESSION

Suggested Retail: \$55.00

Sizes: S-2XL

Delivery Date: In-Stock

Content: 81% Polyester/19% Lycra

Content: 80% Tactel Nylon/20% Lycra

Content: 79% Nylon Tactel/21% Lycra (Mesh)



A close-up photograph of Chris Chambers, a Miami Dolphins player, wearing a black Speed Flex short sleeve jersey. He is looking down with a focused expression. The jersey features a mesh-like texture on the shoulders and sleeves. A small NFL Equipment logo is visible on the chest.

CHRIS CHAMBERS

2235A - "SPEED FLEX" SHORT SLEEVE  
MIAMI DOLPHINS - WR

**SEAMLESS**

- Ergonomically designed next-to-skin fit gives your body support for maximum performance.
- Play Dry™ moisture management fabric keeps you cool and dry all year round.





## "SPEED FLEX" SEAMLESS LOOSE FIT

Seamless Technology incorporates flat knit, large and small stretch mesh for increased breathe-ability without seams. Play Dry™ fabric offers ultimate moisture management and wicking properties.

## SEAMLESS COMPRESSION

Tight, sleek fit gives the feel of working out with an extra soft armor. Seamless Technology incorporates flat knit stretch mesh for increased breathe-ability, textured mesh which reduces the slickness of the fabric, and knitted padding which helps reduce turf burn. Play Dry™ fabric offers ultimate moisture management and wicking properties.



## 2304A "SPEED FLEX" CAP SLEEVE LOOSE FIT

LOOSE FIT

Suggested Retail: \$34.00

Sizes: S-2XL

Delivery Date: In-Stock

Content: 81% Play Dry™ Polyester

Content: 12% Nylon

Content: 7% Spandex



## 2303A "SPEED FLEX" SHORT SLEEVE LOOSE FIT

LOOSE FIT

Suggested Retail: \$36.00

Sizes: S-2XL

Delivery Date: In-Stock

Content: 81% Play Dry™ Polyester

Content: 12% Nylon

Content: 7% Spandex



## 2305A "SPEED FLEX" LONG SLEEVE LOOSE FIT

LOOSE FIT

Suggested Retail: \$40.00

Sizes: S-2XL

Delivery Date: In-Stock

Content: 81% Play Dry™ Polyester

Content: 12% Nylon

Content: 7% Spandex



## 2234A "SPEED FLEX" SEAMLESS SLEEVELESS

COMPRESSION

Suggested Retail: \$56.00

Sizes: S-2XL

Delivery Date: In-Stock

Content: 81% Play Dry™ Polyester

Content: 12% Nylon

Content: 7% Spandex



## 2235A "SPEED FLEX" SEAMLESS SHORT SLEEVE

COMPRESSION

Suggested Retail: \$60.00

Sizes: S-2XL

Delivery Date: In-Stock

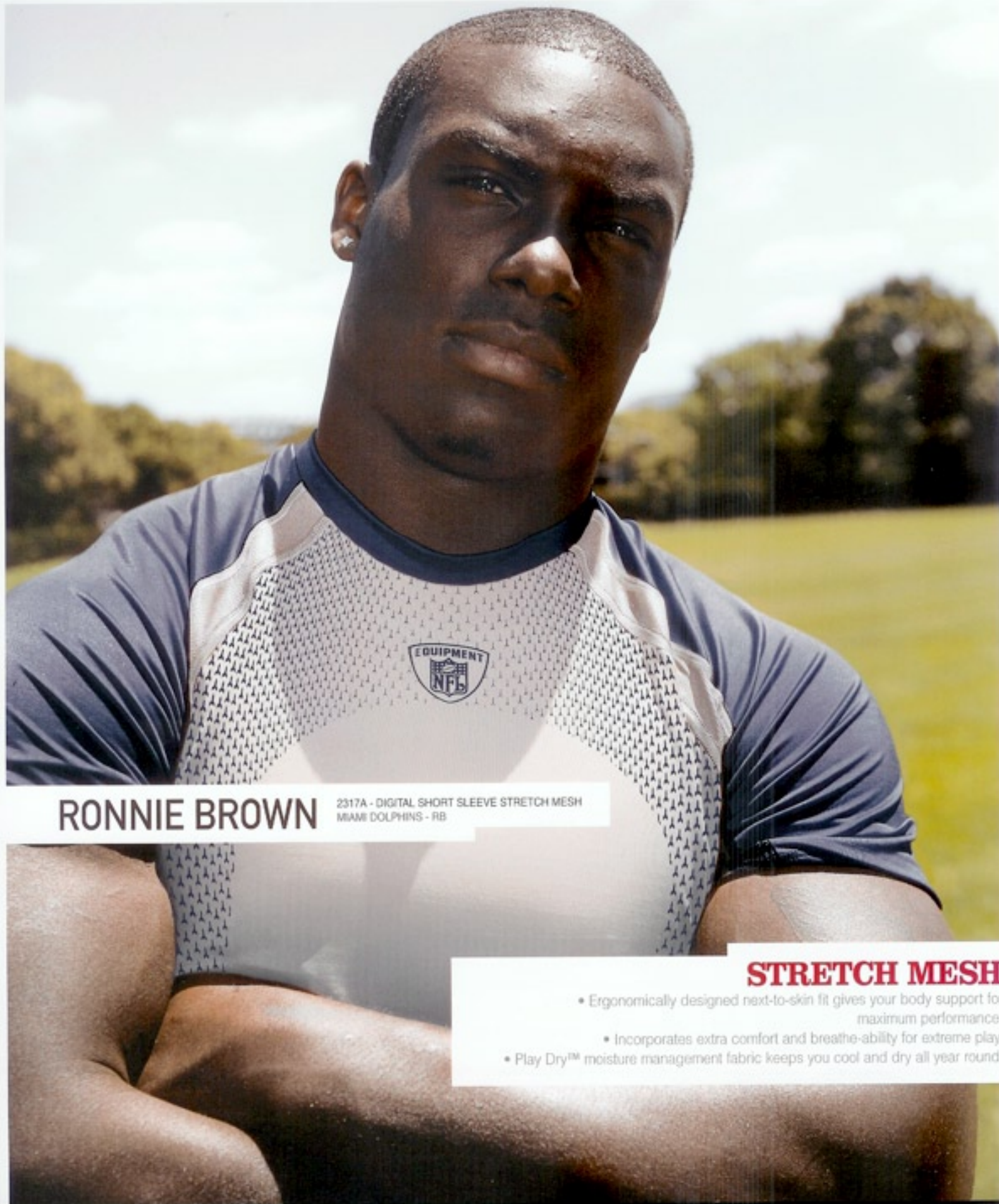
Content: 81% Play Dry™ Polyester

Content: 12% Nylon

Content: 7% Spandex







**RONNIE BROWN**

2317A - DIGITAL SHORT SLEEVE STRETCH MESH  
MIAMI DOLPHINS - RB

## **STRETCH MESH**

- Ergonomically designed next-to-skin fit gives your body support for maximum performance.
- Incorporates extra comfort and breathe-ability for extreme play.
- Play Dry™ moisture management fabric keeps you cool and dry all year round.





## STRETCH MESH

Tight, sleek fit gives the feel of working out with an extra soft armor. Side panels and back are constructed with performance stretch mesh for increased breathe-ability and comfort. Flatlock stitching creates a seamless feel and decreases the chance of chafing and irritation. Play Dry™ fabric offers ultimate moisture management and wicking properties.



### 2317A DIGITAL SHORT SLEEVE STRETCH MESH

COMPRESSION

Suggested Retail: \$45.00

Sizes: S-2XL

Delivery Date: 05/15/07

Content: 5.2 oz. 81% Play Dry™ Polyester/19% Lycra

Content: 79% Tactel Nylon/21% Lycra (Mesh)



### 2318A DIGITAL LONG SLEEVE STRETCH MESH

COMPRESSION

Suggested Retail: \$55.00

Sizes: S-2XL

Delivery Date: 05/15/07

Content: 5.2 oz. 81% Play Dry™ Polyester/19% Lycra

Content: 79% Tactel Nylon/21% Lycra (Mesh)



### 9158A "VENTILATOR" COMPRESSION SHORT

COMPRESSION

Suggested Retail: \$30.00

Sizes: S-2XL

Delivery Date: In-Stock

Content: 7.1 oz. 86% Polyester/12% Spandex

Content: 5 oz. 80% Nylon/20% Spandex (Mesh)



A close-up, profile shot of Chris Chambers, a Miami Dolphins wide receiver, looking off to the side. He is wearing a black and white stretch mesh short-sleeved jersey with white stripes on the shoulders. He is also wearing black gloves and holding a brown football. The background is a clear blue sky.

## CHRIS CHAMBERS

2029A - STRETCH MESH SHORT SLEEVE  
MIAMI DOLPHINS - WR

### STRETCH MESH

- Ergonomically designed next-to-skin fit gives your body support for maximum performance
- Incorporates extra comfort and breathe-ability for extreme play
- Play Dry™ moisture management fabric keeps you cool and dry all year round







## STRETCH MESH

Tight, sleek fit gives the feel of working out with an extra soft armor. Side panels and back are constructed with performance stretch mesh for increased breathe-ability and comfort. Flatlock stitching creates a seamless feel and decreases the chance of chafing and irritation. Play Dry™ fabric offers ultimate moisture management and wicking properties.

## COMPRESSION SHORT

Ergonomic pre-formed fit creates a sleek, soft fit and feel. Flatlock stitching creates a seamless feel which decreases the chance of chafing and irritation. 9" inseam.

### 2051A STRETCH MESH SLEEVELESS

#### COMPRESSION

Suggested Retail: \$30.00

Sizes: S-2XL

Delivery Date: In-Stock

Content: 5.2 oz. 81% Play Dry™ Polyester/19% Lycra

Content: 79% Tactel Nylon/21% Lycra (Mesh)

### 2028A STRETCH MESH SHORT SLEEVE

#### COMPRESSION

Suggested Retail: \$32.00

Sizes: S-2XL

Delivery Date: In-Stock

Content: 5.2 oz. 81% Play Dry™ Polyester/19% Lycra

Content: 79% Tactel Nylon/21% Lycra (Mesh)

### 2050A STRETCH MESH LONG SLEEVE

#### COMPRESSION

Suggested Retail: \$39.00

Sizes: S-2XL

Delivery Date: In-Stock

Content: 5.2 oz. 81% Play Dry™ Polyester/19% Lycra

Content: 79% Tactel Nylon/21% Lycra (Mesh)

### 9126A 5 POCKET COMPRESSION SHORT

#### COMPRESSION

Suggested Retail: \$32.00

Sizes: S-2XL

Delivery Date: In-Stock

Content: 7.1 oz. 88% Polyester/12% Spandex

Content: 5 oz. 80% Nylon/20% Spandex (Mesh)

### R952A "BODY BULLET" COMPRESSION SHORT

#### COMPRESSION

Suggested Retail: \$25.00

Sizes: S-2XL

Delivery Date: In-Stock

Content: 7.1 oz. 88% Play Dry™ Polyester/12% Spandex







JEVON KEARSE

R223A - "LOOSEGUIDE" SLEEVELESS  
PHILADELPHIA EAGLES - DE

## ALL WEATHER LOOSE FIT

- Easy-moving design enhances any activity.
- Lighter weight Play Dry™ moisture management fabric keeps you cool and dry all year round.



OFFICIAL OUTFITTER OF THE NFL







## LOOSEGLIDE

Ergonomic cut creates a pre-formed shape. Flatlock stitching creates a seamless feel for less chance of chafing and irritation. Play Dry™ fabric offers ultimate moisture management and wicking properties. Loose fit design creates comfort and breathe-ability.

## FLEECE HOODY

Sueded fleece provides warmth, comfort, and softness. Raglan shoulders, with large front pouch pocket and NFL Equipment screenprint logo.

## MESH PERFORMANCE

Micro-mesh offers extra softness and comfort. 2 ply micro mesh short. 9" inseam for ultimate comfort.



### R223A "LOOSEGLIDE" SLEEVELESS

LOOSE FIT

Suggested Retail: \$28.00

Sizes: M-2XL

Delivery Date: In Stock

Content: 4.2 oz. 100% Play Dry™ Polyester

Content: Collar 1 x 1 Polyester knit rib



### R216A "LOOSEGLIDE" SHORT SLEEVE

LOOSE FIT

Suggested Retail: \$30.00

Sizes: M-2XL

Delivery Date: In Stock

Content: 4.2 oz. 100% Play Dry™ Polyester

Content: Collar 1 x 1 Polyester knit rib



### R226A "LOOSEGLIDE" LONG SLEEVE

LOOSE FIT

Suggested Retail: \$36.00

Sizes: M-2XL

Delivery Date: In Stock

Content: 4.2 oz. 100% Play Dry™ Polyester

Content: Collar 1 x 1 Polyester knit rib



### 8173A FLEECE HOODY

LOOSE FIT

Suggested Retail: \$65.00

Sizes: S-2XL

Delivery Date: In Stock

Content: 12.5 oz. 80% Brushed Cotton, 20% Polyester



### R929A MESH PERFORMANCE SHORT

LOOSE FIT

Suggested Retail: \$25.00

Sizes: S-2XL

Delivery Date: In Stock

Content: 4 oz. 100% Polyester Mesh



A full-page photograph of Ray Lewis, a Baltimore Ravens player, wearing a white long-sleeved compression shirt. He is sitting down, leaning forward with his hands clasped, looking directly at the camera with a serious expression. The background is a dark locker room with blue lockers and a Ravens jersey hanging on the wall.

**RAY LEWIS**

R235A - COLD WEATHER "MOCK TOASTY"  
BALTIMORE RAVENS - LB

## COLD COMPRESSION FIT

• Next-to-skin fit

- Maximum protection and maximum performance for extreme weather conditions
- Heavier weight moisture management Play Dry™ fabric keeps you warm and dry in cooler weather







## COLD WEATHER COMPRESSION FIT

Engineered with a double-sided fabric that disperses heat from warmer areas of the body throughout the garment to help regulate your body temperature. Flatlock stitching creates a seamless feel which decreases the chance of chafing and irritation. Play Dry™ fabric offers ultimate moisture management and wicking properties.

## TEXTURED COLD WEATHER

Double Knit Micro-Polyester helps disperse heat from warmer areas of the body throughout the shirt to help regulate your body temperature. Flatlock stitching creates a seamless feel which decreases the chance of chafing and irritation. Play Dry™ fabric offers ultimate moisture management.



### R235A COLD WEATHER "MOCK TOASTY"

#### COMPRESSION

Suggested Retail: \$50.00

Sizes: S-2XL

Delivery Date: In Stock

Content: 7.8 oz. 88% Play Dry™ Polyester/12% Spandex

### R957A COLD WEATHER "TOASTY" TIGHT

#### COMPRESSION

Suggested Retail: \$45.00

Sizes: S-2XL

Delivery Date: In Stock

Content: 5.5 oz. 76% Micro-Polyester/24% Spandex

### 2058A TEXTURED COLD WEATHER MOCK

#### COMPRESSION

Suggested Retail: \$55.00

Sizes: S-2XL

Delivery Date: In Stock

Content: 89% Polyester/11% Spandex

### 2131A TEXTURED COLD WEATHER CREW

#### COMPRESSION

Suggested Retail: \$60.00

Sizes: S-2XL

Delivery Date: In Stock

Content: 89% Polyester/11% Spandex

### 9205A TEXTURED COLD COMPRESSION SHORT

#### COMPRESSION

Suggested Retail: \$32.00

Sizes: S-2XL

Delivery Date: In Stock

Content: 7.8 oz. 89% Play Dry Polyester 11% Spandex

\*\* 9" inseam



# NFL EQUIPMENT YOUTH

## LOOSEGLIDE

Tight, sleek fit gives the feel of working out with an extra soft armor. Side panels and back are constructed with performance stretch mesh for increased breathe-ability and comfort. Flatlock stitching creates a seamless feel and decreases the chance of chafing and irritation. Play Dry™ fabric offers ultimate moisture management and wicking properties.

## SPEEDWICK

Raglan sleeve and Flatlock. 3 technologies incorporated in the yarn: Play Dry™ offers ultimate moisture management; AMY (anti-microbial yarns) prevents the growth of odor-causing bacteria and preserves fabrics and garments from discoloration and degradation caused by mold, mildew and fungi; Augusta - Performance Filament Polyester with a spun-like look and feel.

### R216B "LOOSEGLIDE" SHORT SLEEVE

LOOSE FIT

Suggested Retail: \$25.00  
Delivery Date: 05/15/07 Sizes: YM-YL

Content: 4.2 oz. 100% Play Dry™ Polyester  
Content: Collar 1 x 1 Polyester knit rib



### R226B "LOOSEGLIDE" LONG SLEEVE

LOOSE FIT

Suggested Retail: \$30.00  
Delivery Date: 05/15/07 Sizes: YM-YL

Content: 4.2 oz. 100% Play Dry™ Polyester  
Content: Collar 1 x 1 Polyester knit rib



### 2242B "SPEEDWICK" SHORT SLEEVE SHIRT

LOOSE FIT - ANTI-MICROBIAL/COTTON HAND

Suggested Retail: \$22.00  
Delivery Date: 05/15/07 Sizes: YM-YL

Content: 4.7 oz. 100% Play Dry™, Polyester



### 2243B "SPEEDWICK" LONG SLEEVE SHIRT

LOOSE FIT - ANTI-MICROBIAL/COTTON HAND

Suggested Retail: \$25.00  
Delivery Date: 05/15/07 Sizes: YM-YL

Content: 4.7 oz. 100% Play Dry™, Polyester





### HOT COMPRESSION FIT

Tight, sleek fit gives the feel of working out with an extra soft armor. Flatlock stitching creates a seamless feel. Fabric offers ultimate moisture management and wicking properties. Side and shoulder seams removed to decrease chafing and irritation during workouts.

### COLD WEATHER COMPRESSION FIT

Engineered with a double-sided fabric that disperses heat from warmer areas of the body throughout the garment to help regulate your body temperature. Flatlock stitching creates a seamless feel which decreases the chance of chafing and irritation. Play Dry™ fabric offers ultimate moisture management and wicking properties.



### R217B "BODY BULLET" SHORT SLEEVE

COMPRESSION

Suggested Retail: \$22.00

Sizes: YM-YL

Delivery Date: 05/15/07

Content: 5.2 oz. 81% Play Dry™ Polyester/19% Lycra



### R218B "BODY BULLET" LONG SLEEVE

COMPRESSION

Suggested Retail: \$30.00

Sizes: YM-YL

Delivery Date: 05/15/07

Content: 5.2 oz. 81% Play Dry™ Polyester/19% Lycra



### R235B COLD WEATHER "MOCK TOASTY"

COMPRESSION

Suggested Retail: \$45.00

Sizes: YM-YL

Delivery Date: 05/15/07

Content: 7.8 oz. 88% Play Dry™ Polyester/12% Spandex



### R957B COLD WEATHER "TOASTY" TIGHT

COMPRESSION

Suggested Retail: \$40.00

Sizes: YM-YL

Delivery Date: 05/15/07

Content: 5.5 oz. 76% Micro Polyester/24% Spandex



### H003Z 4" EQUIPMENT WRISTBAND

**Suggested Retail:** \$7.00  
**Delivery Date:** 05/15/07

**Content:** 98% Cotton/2% Spandex  
**Description:** Cotton terry cloth wristband with wicking properties. Felt logo applique.



### H017Z 6" EQUIPMENT WRISTCOACH

**Suggested Retail:** \$11.00  
**Delivery Date:** 05/15/07

**Content:** 75% Cotton/25% Rubber  
**Description:** NFL Equipment patch with clear plastic pouch.



### H075Z 2" EQUIPMENT WRISTBAND

**Suggested Retail:** \$5.00  
**Delivery Date:** 05/15/07

**Content:** 98% Cotton/2% Spandex  
**Description:** Cotton terry cloth wristband with wicking properties. Felt logo applique.



### Y008Z NFL EQUIPMENT FOREARM SHIMMEL

**Suggested Retail:** \$19.00  
**Delivery Date:** 05/15/07

**Content:** 81% Polyester/19% Lycra  
**Description:** Sleek, tight fit forearm shimel. NFL Equipment heat transfer logo.





## H001Z NFL EQUIPMENT HEADBAND

Suggested Retail: \$7.00

Delivery Date: 05/15/07

Content: 98% Cotton/2% Spandex

Description: Cotton terry cloth headband with wicking properties. Felt logo applique.



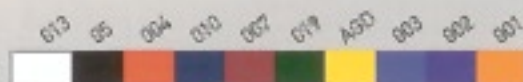
## C045Z GAME SOCK

Suggested Retail: \$10.00

Delivery Date: 05/15/07

Content: 93% Microfiber Acrylic/4% Nylon/3% Spandex

Description: White.



## Y006Z NFL EQUIPMENT THERMAL HOOD

Suggested Retail: \$19.50

Delivery Date: 05/15/07

Content: 88% Nylon/10% Lycra/2% Elastic

Description: Thermal hood with heat transfer logo.



## K251Z NFL EQUIPMENT SKULL CAP

Suggested Retail: \$13.00

Delivery Date: 05/15/07

Content: 88% Polyester/12% Lycra

Description: Sleek, next-to-skin fit incorporates stretch mesh for enhancing breathe-ability and control. NFL Equipment stretch heat transfer logo.

## CONTACT INFORMATION

MIKE MASLOWSKI

BILLY BABER

**MB2**  
SPORTS

**MB2**  
SPORTS

TEL 913 231 2139 / MAZ@MB2SPORTS.COM

TEL 913 231 2339 / BILLY@MB2SPORTS.COM

## ABOUT COLOR

Colors for each equipment line and some specific items may vary from actual color. Please contact Reebok for a complete list of available colors and styles.







OFFICIAL OUTFITTER OF THE NFL

